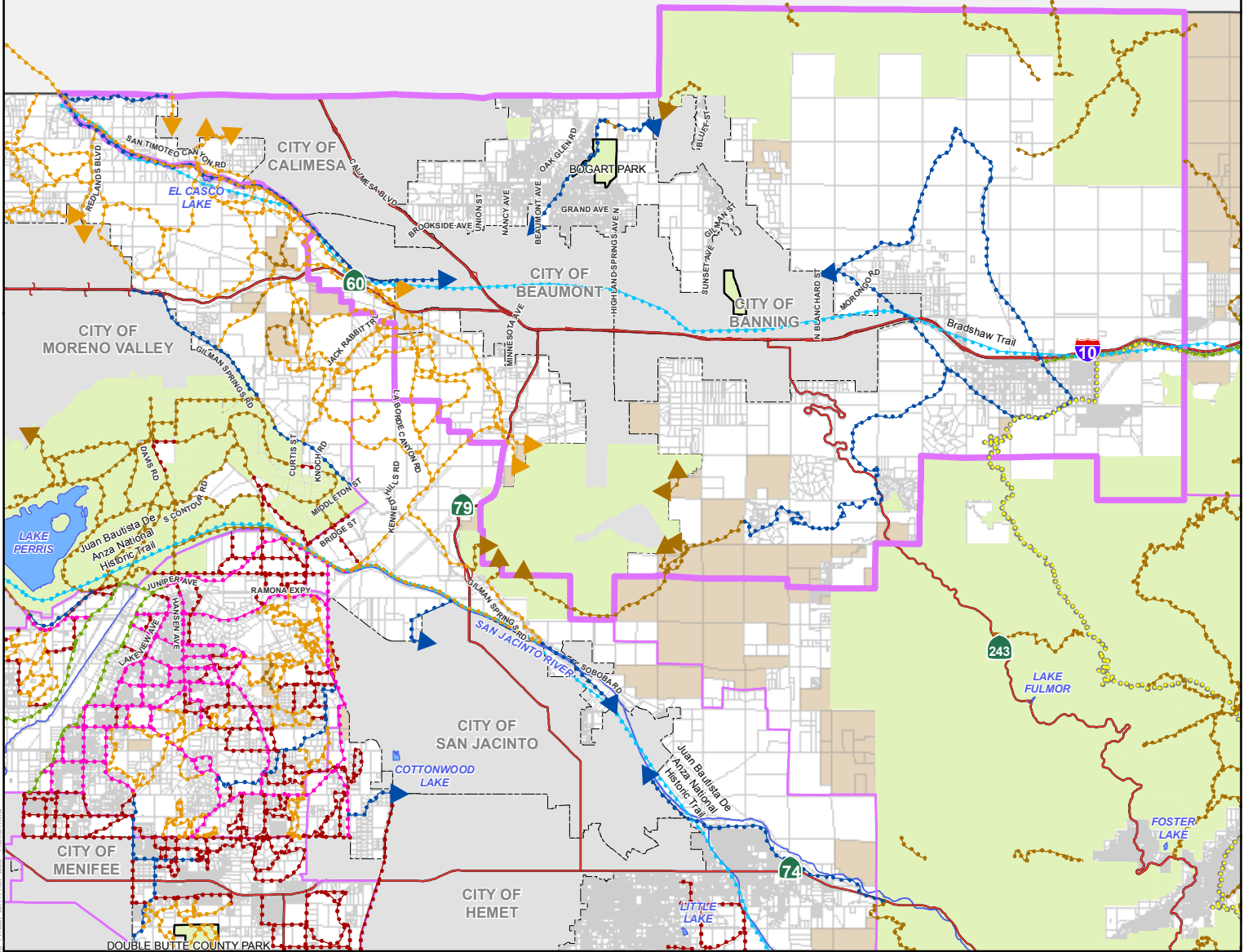


San Bernardino County



- Regional Trail
- Community Trail
- Combination Trail (Regional / Class 1 Bike Path)
- Open Space Trail
- Design Guidelines Trail
- Historic Trail
- Non-County Public and Quasi-Public Lands Trails
- California Riding & Hiking Trail
- City Boundary
- Area Plan Boundary
- Bureau of Land Management (BLM) Lands
- Miscellaneous Public Parks and Forest Lands
- Waterbodies
- Highways

Data Source: Primarily Riverside County Regional Park and Open Space District, with assistance from Riverside County TLM/Transportation and Planning Departments, Riverside County Economic Development Agency, and other local, state, and federal recreational services agencies.

Note: Trails and bikeway maps are a graphic representation identifying the general location and classification of existing and proposed trails and bikeways in the unincorporated area of the County. All questions regarding precise alignment or improvement standards should be referred to the Riverside County Regional Park and Open Space District.

Note: Except for major regional facilities, trails and bikeways systems located within cities are generally not shown. Where trails and bikeways exist or are planned in the unincorporated area in such a manner that there are opportunities for connections with existing or planned trails and bikeways within adjacent cities, an arrow symbol is used to show the approximate location of the intended connection opportunity. The reader should contact the appropriate city for all information about that city's existing or planned trails and bikeways systems.

Figure 8

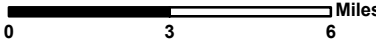
January 13, 2010

DRAFT

Disclaimer: Maps and data are to be used for reference purposes only. Map features are approximate, and are not necessarily accurate to surveying or engineering standards. The County of Riverside makes no warranty or guarantee as to the content (the source is often third party), accuracy, timeliness, or completeness of any of the data provided, and assumes no legal responsibility for the information contained on this map. Any use of this product with respect to accuracy and precision shall be the sole responsibility of the user.



THE PASS AREA PLAN TRAILS AND BIKEWAY SYSTEM



Agency\img\Projects\Planning\Safety_Element\Area_Plan_MXD\ThePass_AreaPlan\ThePass_Trails.mxd