

LOS ANGELES DISTRICT  
U.S. ARMY CORPS OF ENGINEERS

PUBLIC NOTICE OF PROPOSED ACTIVITY  
AFFECTING FEDERAL LANDS

Asset Management Division,  
Civil Works Branch

Santa Ana River Trail (SART/Proposal) at Prado Flood Control Basin  
Riverside County, California

This Public Notice is issued by the U.S. Army Corps of Engineers (USACE), Chief, Asset Management Division, for the Santa Ana River Trail's (SART/Proposal's) Draft Environmental Assessment (dEA) as required by National Environmental Policy Act (NEPA). Environmental issues relating to the Proposal are discussed in the dEA which has been prepared for public review and which will be sent to agencies, organizations, and local libraries. The public is invited to review and to comment on the dEA which analyzes environmental affects that could occur if the USACE approved the use and occupation of Federal land, located in the Prado Flood Control Basin in Riverside County, for the construction, operation and maintenance of a regional section of the Santa Ana River Trail. The proposed SART would consist of Class I/II Bikeway with a lane for equestrian and pedestrian users.

**PUBLIC NOTICE COMMENT PERIOD:** December 1, 2011-January 15, 2012

**PROPOSED IMPLEMENTATION DATE:** Begin construction in 2012.

**PROPONENT:** County of Riverside (County), City of Corona (City)

**LOCATION:**

Construction of a Santa Ana River Trail has long been envisioned as connecting mountainous Santa Ana River watershed areas in San Bernardino County, and downstream toward, and terminating at, the Pacific Ocean. The SART would eventually traverse three counties and in some reaches has already been constructed, with most of the trail/bikeway systems already complete in Orange County, approximately sixty percent complete in Riverside County, and over seventy-five percent complete in San Bernardino County. In the case of this Proposal, the requested lands are located in Riverside County and the SART would generally follow the Santa Ana River, upstream from approximately Arlington Avenue at Hidden Valley Nature Center, and downstream to Green River Road at the Green River Golf Course entrance. This proposed portion, which would pass through Prado Basin as "Reaches I-IX", spans approximately 25 linear miles and the construction of this section would provide connections, both northward and southward, to already constructed SART portions located upstream and downstream of this proposed, 25-mile segment (see Exhibit 1)

**PROPOSED FEDERAL ACTION:**

The Proposal would permit the City of Corona, which is the Corps recreation lessee in this vicinity, use of Federal fee lands in developing a recreational and transportation corridor for bicyclists, equestrians, and pedestrians and including restroom facilities, lookouts, interpretative signage, overlook opportunities, and equestrian improvements to the extent compatible with the Prado Dam and its operations. Use would be conditioned by factors deemed necessary by federal law, regulation, or policy. The Federal action is limited to permission to construct, operate and maintain the proposed SART in Reaches I-IX (from north to south) of the SART's Corona-Norco-Eastvale Segment

on lands owned by the United States in the general area which includes the Prado Basin. The federal action would terminate at Reach IX, which is the northern boundary of Federal fee ownership. Separate and additional evaluation may be required by Orange County for portions of the trail crossing lands belonging to Orange County, which is the non-Federal sponsor for the Prado Dam structures. The Proponent has expressed a preference to construct a dual trail system, which would separate cyclists from pedestrians and equestrians, to facilitate both safety and movement along the trail system. Where space or technical conditions would not permit two trails, then a multi-use trail may be constructed, as is consistent with existing, built reaches of the SART in Orange and Riverside Counties.

The USACE will evaluate the Proposed Action, along with reasonable alternatives, including the no action alternative, the Proponent's proposed alternative and modifications thereto, under the National Environmental Policy Act (NEPA) through an Environmental Assessment (EA).

### **PUBLIC REVIEW PERIOD:**

The Corps invites the general the general public to submit comments on potential environmental impacts that could result from implementation of the Proposal and alternatives. The public comment period on preparation of an EA for the proposal described above will extend from December 1, 2011 through January 15, 2012. Copies of the dEA are available for review at the following locations:

#### **City Libraries of Corona, Norco, and Eastvale:**

Corona Public Library  
650 S. Main Street  
Corona, CA 92882

Riverside City Library  
3581 Mission Inn Avenue  
Riverside, CA 92510

Eastvale Public Library  
7447 Scholar Way  
Eastvale, CA 92880

Louis B. Robidoux Library  
5840 Mission Boulevard  
Riverside, CA 92509

Norco Public Library  
3954 Old Hamner Road  
Norco, CA 92860

The dEA may also be viewed at the City and Corps websites as provided below:

City of Corona website:

<http://www.discovercorona.com/City-Departments/Parks---Community-Services.aspx>

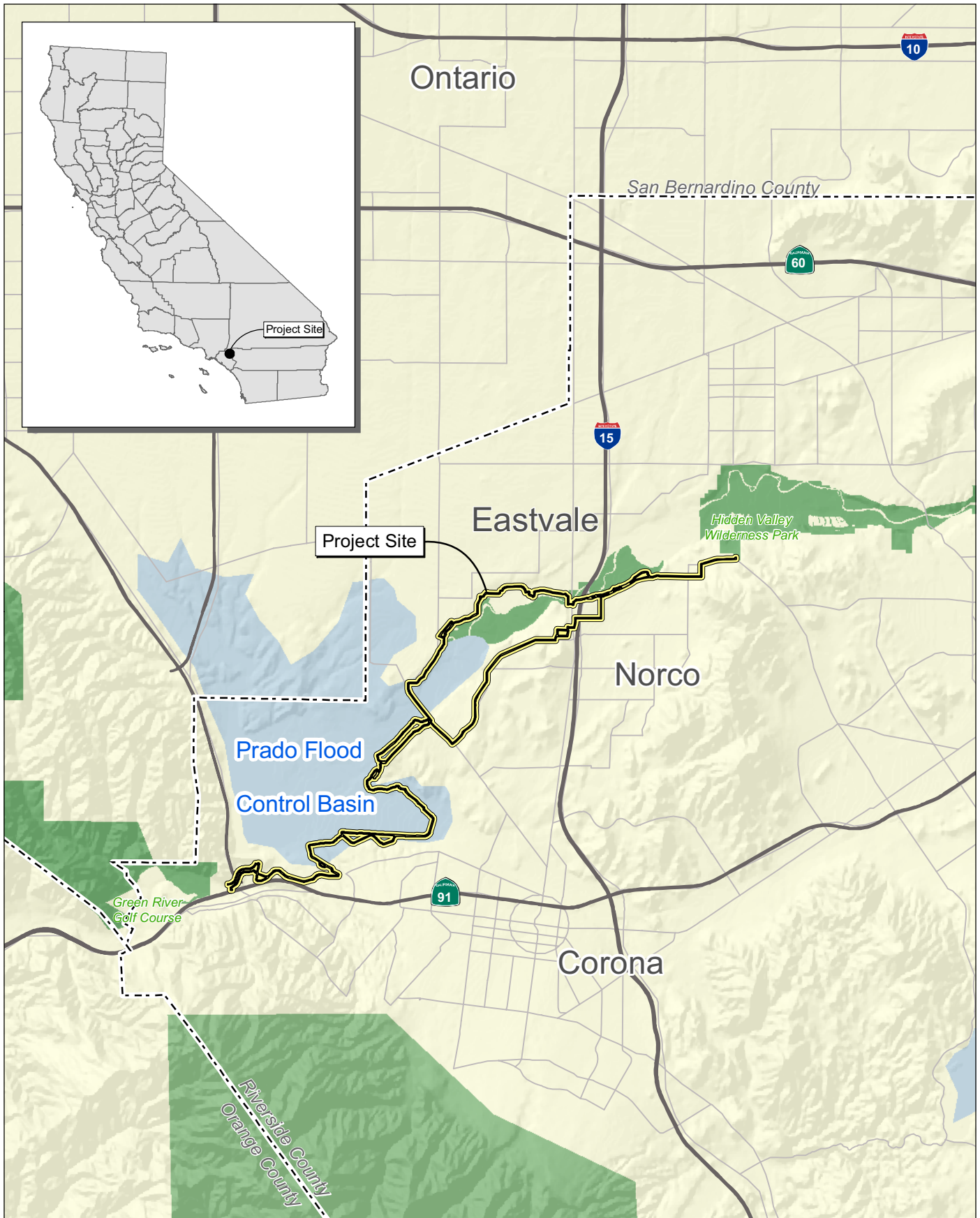
Corps website:

<http://www.spl.usace.army.mil/publicnotices.html>

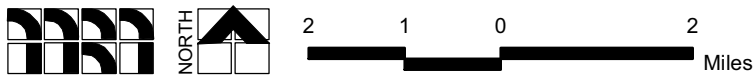
Any questions on locations for viewing the dEA or how to view the dEA, please direct to the City of Corona at (951) 736-2241.

Please direct comments to Carvel Bass, Asset Management Division, at (213) 452-3392 and [carvel.h.bass@usace.army.mil](mailto:carvel.h.bass@usace.army.mil) or by mail to Attn: Asset Management Division, USACE, Los Angeles District 915 Wilshire Boulevard, Los Angeles, CA 90017, Attn: Asset Management Division. All comments must be received by 5 p.m., January 2, 2012.

The Corps will actively consider any comments timely received. The results of this consideration will be reflected in a section of the EA articulating responses to the comments, in addition to any changes to the EA made to incorporate the comments and suggestions. Once the EA is complete, and if a FONSI is determined to be appropriate based upon the analysis contained in the EA, pursuant to 33 C.F.R. 230.11, a notification will be sent to concerned agencies, organizations and the interested public stating that the FONSI is available for review. If you would like to receive notification, please provide an email address with your comment letter. The FONSI will also be posted on the Corps and City websites. If significant effects on the quality of the human environment are identified and cannot be mitigated to a level below significance, the Corps will initiate preparation of an EIS and afford the public opportunities to participate in the environmental review process.



Source: Census 2000 Data, The CaSIL, MBA GIS (2011).



Michael Brandman Associates

34800002 • 11/2011 | 1\_regional.mxd

## Exhibit 1 Regional Location Map