

Archaeological Institute of America's  
Riverside & Inland Southern California  
Society & Riverside County Parks

## International Archaeology Day Expo

October 20, 2018

10am - 3pm

Event Free  
Parking \$5



4<sup>th</sup> Saturday of  
November/January/March & May

12 pm to 3 pm

Drop in anytime. An activity or  
craft is offered, while supplies  
last. These programs are designed  
to spark curiosity on a variety of  
nature based topics.

## Knee-High Naturalist

### Parent-n-Me Outdoor Educational Program

Beginning January 2019

Each session is 8 weeks long,  
twice weekly, Monday & Thursday.

\*\* \$75 per session \*\*

Ages 1-3 9:00—10:00 a.m.

Ages 3-5 11 a.m.—12:30 p.m.

Escape into nature as you explore  
and make connections with your child.  
Each class takes a hands-on approach  
to learning including, activities, hikes,  
music, arts, crafts, and games.

\*Preregistration Required

## Summer Camp 2019

Registration begins March 18th

\$100 per week, per child



Save the dates!

**Week 1** June 17-21

*Wild about Wetlands*

**Week 2** June 24-28

*Kid vs Wild Wilderness Camp*



## DUCK DAZE!

Saturday, May 4, 2019

10:00am to 2:00pm

\$4.00 per Person

A fun-filled day for the whole family!  
\*Guided Nature Walks \*Crafts \*Hayrides \*Games  
\*Live animals \*Vendors \*Food Truck

## Wonders of the Watershed Event

January 19th 2019

July 20th 2019

10am to 2 pm

Event Free

Parking \$5.00



Journey through the Watershed!

## Hidden Valley Nature Center

Offers Facility Rentals:

Amphitheater \$50.00 per hour, 3 hour min.

Classroom - \$50.00 per hour, 3 hour min.

For more detailed information regarding facility rentals, please visit the website:

[www.rivcoparks.org](http://www.rivcoparks.org)

[www.friendsofhiddenvalley.org](http://www.friendsofhiddenvalley.org)

\*Please call us for availability and reservations.

## Nature's Pathway Outdoor Classroom

Come and explore our newest addition to Hidden Valley!

On select Saturday's additional interactive items are out for play.

\*Weather & staffing dependent



Help support the programs here at the Nature Center and become a member of the Friends of Hidden Valley! Visit our Friends' website for more information:

[www.friendsofhiddenvalley.org](http://www.friendsofhiddenvalley.org)

## Educational Programs

On-site and Outreach programs align with California State Standards.

*Insect Safari*

*Rock On! Geology*

*Our Watershed: Pathway to the Pacific*

*Amazing Adaptations*

*Tongva: The People of the Earth*

*Wetland Wonders*

Visit our website for detailed information:

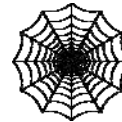
[www.rivcoparks.org](http://www.rivcoparks.org)

Contact us to book a program:

E-mail: [Parks-HiddenValley@rivco.org](mailto:Parks-HiddenValley@rivco.org)

Phone: 951-785-7452

“Mankind has not woven the web of life. We are but one thread within it. Whatever we do to the web, we do to ourselves. All things are bound together. All things connect.”



Chief Seattle



**Parks make life better!**

# HIDDEN VALLEY NATURE CENTER



## 2018-2019

## SCHOOL YEAR

**11401 ARLINGTON AVE**

**RIVERSIDE, CA 92505**

**(951) 785-7452**

E-MAIL: [Parks-HiddenValley@rivco.org](mailto:Parks-HiddenValley@rivco.org)

[www.rivcoparks.org](http://www.rivcoparks.org)

[www.friendsofhiddenvalley.org](http://www.friendsofhiddenvalley.org)

**Open Saturdays**

**10 am –4 pm**

(Tuesday-Friday groups by appointment only)